

Terminaler

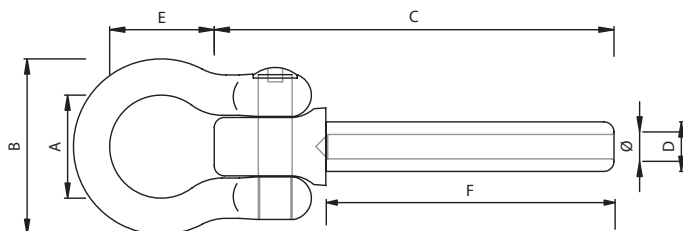
Flex

Terminals

Flex

Terminales

Flexible



Vare nr. Part no. Parte no.	A	B	C	D	E	F	Ø	Efter presning After pressing Prensado	Vægt Weight Peso	F/Wire Str/Size Tamano	Presse bakker Swaging dies Mordaza de prensa	Pressekapacitet Required pressure Potencia de la prensa
	mm	mm	mm	mm	mm	mm	mm	mm	kg			Ton
NE 14 F	42	75	123	32,0	50	70	14,5	28	1,2	14	DIE-NE-28	250
NE 16 F	42	75	133	32,0	50	80	16,5	28	1,2	16	DIE-NE-28	250
NE 18 F	42	75	143	32,0	50	90	18,5	28	1,2	18	DIE-NE-28	250
NE 20 F	56	100	175	42,5	57	100	20,5	36	3,1	20	DIE-NE-36	300
NE 22 F	56	100	185	42,5	57	110	22,5	36	3,1	22	DIE-NE-36	300
NE 24 F	56	100	195	42,5	57	120	24,5	36	3,1	24	DIE-NE-36	300